

Living vs. Nonliving

How can we tell if something is living?

Do you think yeast living or not?

Grade 6 - Yeast Experiment - What you will need

Consumables -
Classroom/Teacher box

1. Yeast
2. Sugar
3. Water (in graduated cylinders around the classroom not too cold)
4. A plate

Science tools - Kea



Microscopes



Time to Observe the Yeast

Describe what you see, and smell.



How could you set up an experiment to tell if they are living or nonliving?

You can use the lab tools described above.
Talk and discuss as a class.

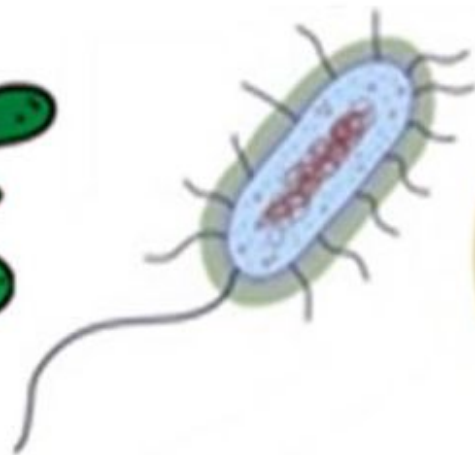
Single-Celled Organisms



Paramecium



Amoeba

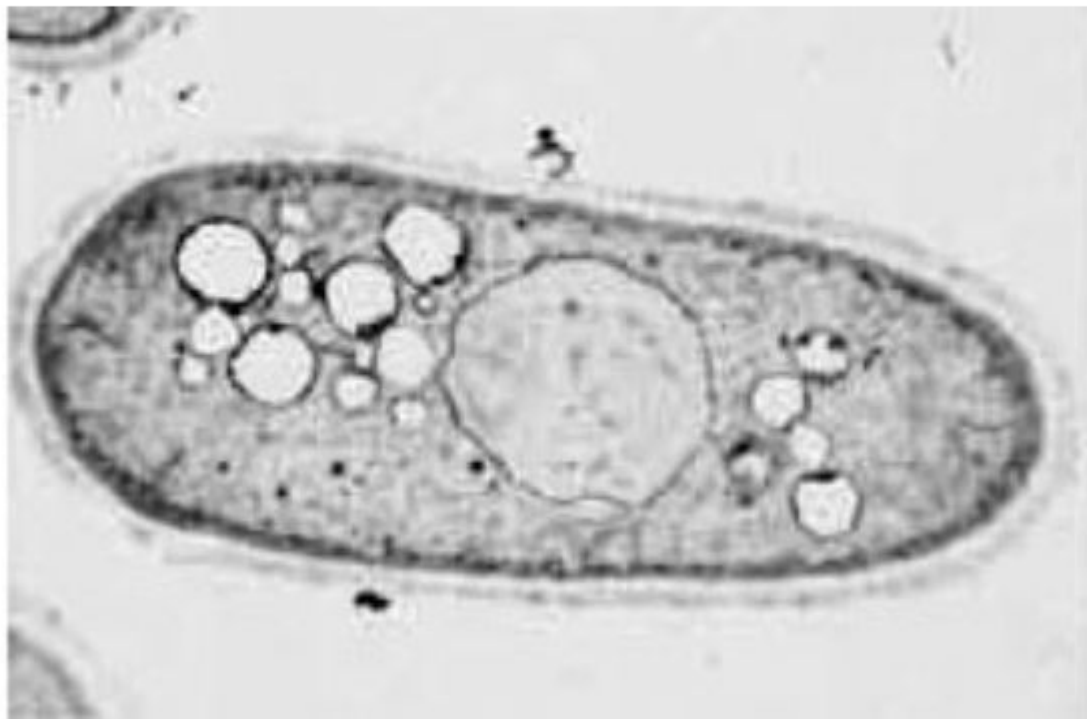


Bacteria



Yeast

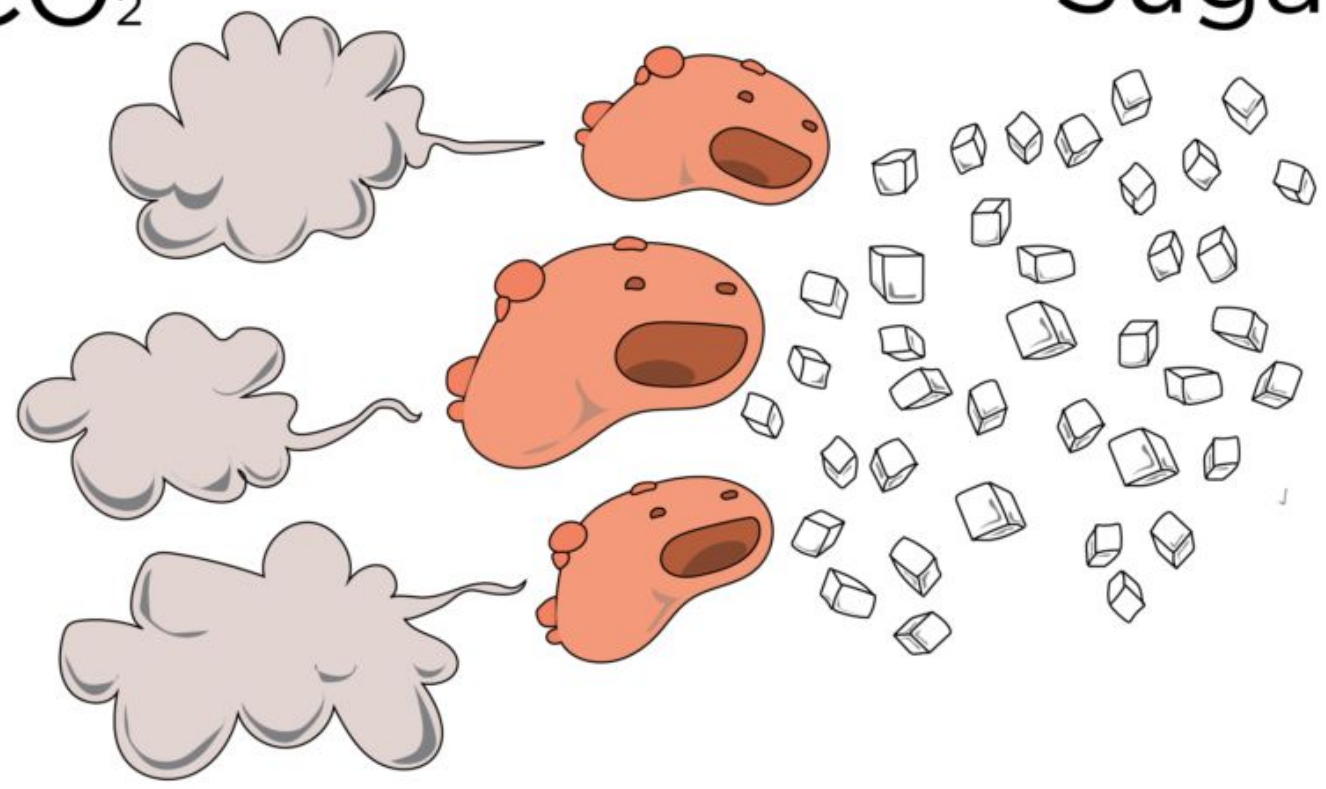
Yeast



CO₂

Yeast

Sugar



Dough

